



Load break switches

for specific applications

Load break switches

Despite already offering a wide range of load break switches, SOCOMEC also manufactures specific products to suit any requirement. Some of these products can be seen on these two pages. This list is not exhaustive.

Please do not hesitate to contact us.

Compliance with standards

- > IEC 60947-3
- > BS EN 60947-3
- > EN 60947-3
- > NBN EN 60947-3
- > VDE 0660-107 (1992)



SIRCO range with overrated neutral

sirco_255_a_1_cat

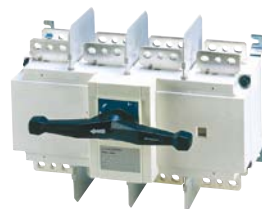


The use of power electronics is becoming more and more frequent. Chopper, rectifiers and current inverters distort the signal by reinjecting the 3rd order harmonics which are combined in the neutral. Range available from 125 to 1800 A.

SIRCO 3 x 250 A with 400 A rated neutral

SIRCO high short-circuit withstand

sirco_353_a_1_cat



- 80 kA rms 1 s.
- 110 kA rms 0.1 s.
- 240 kA peak.

SIRCO early break AC

sirco_380_a_1_cat



SIRCO 3 x 1250 A with early prebreak AC

- Complete range from 125 to 3200 A.
- Double positive break indication given through a position indication window, located directly on the product, and by the operating handle.
- Features an early break auxiliary contact as standard.
- Severe load duty categories (AC-22 and AC-23).
- High resistance to damp heat (supplied "tropicalised").

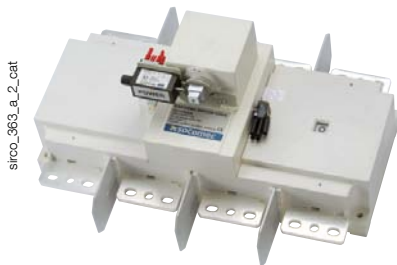
INOSYS LBS



INOSYS LBS are load break switches integrating a patented breaking technology that allows a high breaking capacity up to 1000 VAC.

Their modular design allows to configure the poles' availability on-demand and mix the ratings.

SIRCO for earthing



- From 800 to 1800 A.
- 50 kA rms 1 s.
- Special S4 type handle.
- Undervoltage coil interlocking.

