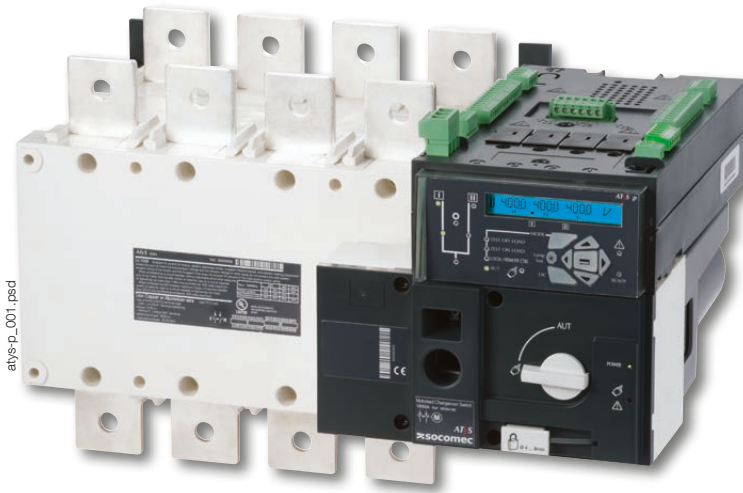


ATyS p

Automatic Transfer Switching Equipment from 125 to 3200 A

Transfer switches



atys-p_001.psd

Function

ATyS p are 3 or 4 pole automatic transfer switches with positive break indication. They incorporate all the functions offered by the ATyS g, as well as functions designed for **power management and communication**.

In automatic mode they enable the monitoring of, and the on-load changeover between, two power supply sources, in accordance with the parameters configured through LCD display, or via communication.

They are intended for use in low voltage power supply systems where a brief interruption of the load supply is acceptable during transfer.

Advantages

Recording of events

ATyS p switches enable effective monitoring of your installation thanks to timestamped event recording.

Events can be retrieved and read via communication.

Optional communication modules

The ATyS p offers communication functions through the addition of optional modules, such as RS485 Modbus or Ethernet with embedded Webserver.

Configuration software

Software (Easyconfig) is available enabling the ATyS p parameters to be easily configured and the existing configuration to be saved and sent to other units.

Power measurements

ATyS p products are particularly suited to energy management and monitoring.

In addition to their integrated power and energy measurement functions (with a 2% accuracy level), programmable inputs/outputs can be utilised to control load shedding based on a load level or tariff.

Possibility to set periodic genset startup

ATyS p switches offer additional functions for maintenance. They include a programmable genset starting function which allows the starting dates and operating times to be configured.

The solution for

- > Applications requiring power management and communication.



Strong points

- > Optional communication modules
- > Recording of events
- > Configuration software
- > Power measurements
- > Possibility to set periodic genset startup

Conformity to standards

- > IEC 60947-6-1
- > IEC 60947-3
- > GB/T 14048.11



Approvals and certifications⁽¹⁾



BUREAU VERITAS



(1) Product references on request.

Webserver

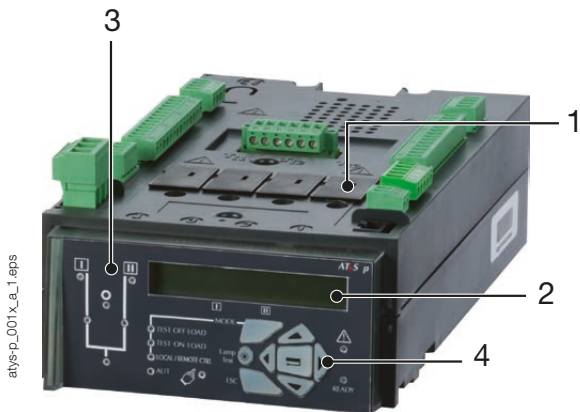
The Webserver function comprises HTML pages embedded in the Ethernet communication module.

These pages can be accessed via an internet browser, simply by entering the IP address.

The webserver offers the following functionalities:

- > Display of source status and switch position
- > Display of the main measurements
- > Extraction of the latest logged events
- > Display of the product configuration

Front panel



1. Slots for optional plug-in modules.
2. Backlit LCD display.
3. Source availability and position indication LEDs.
4. Pushbuttons for programming and mode selection.

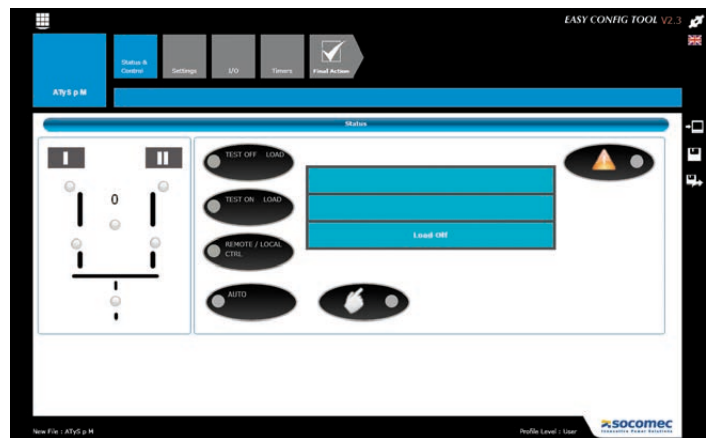
Communication and configuration

Easyconfig

Easyconfig software is the ideal solution to save time and simplify complex configuration.

Allows configuration of the following parameters:

- application type,
- voltage/frequency thresholds,
- timers,
- inputs/outputs...



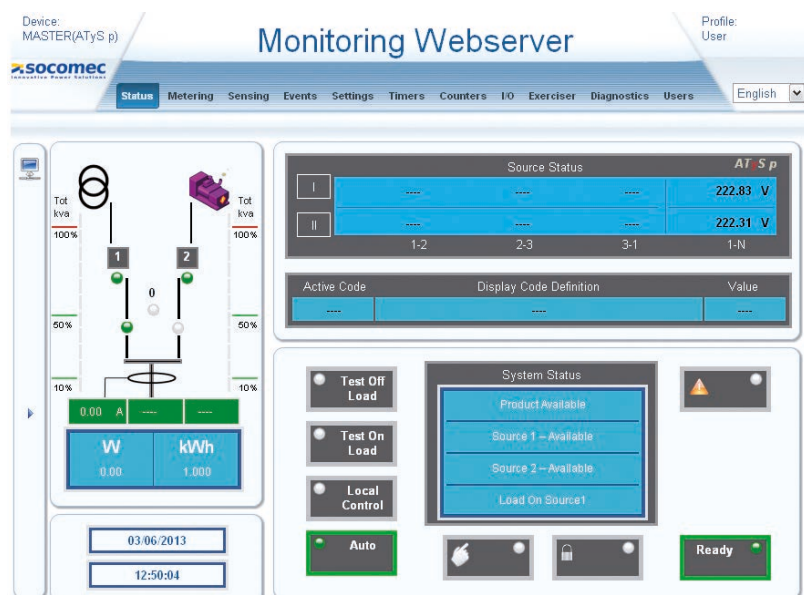
Webserver

Thanks to optional modules, ATyS p can communicate in **Modbus** and **Ethernet** protocols.

The Ethernet communication module includes the **Webserver** function for access to the ATySp via an internet browser.

The Webserver function enables:

- display of source status and switch position,
- display of voltage measurements,
- display of parameters,
- access to the list of logged events.



References

ATyS p

Rating (A) / Frame size	No. of poles	ATyS p	Bridging bars	Voltage sensing and power supply tap	Terminal shrouds	Terminal screens	Optional modules	Auxiliary contact
125 A / B3	3 P	9573 3012						
	4 P	9573 4012						
160 A / B3	3 P	9573 3016	3 P 4109 3019	3 P 1559 3012	3 P 2694 3014 ⁽²⁾	3 P 1509 3012		
	4 P	9573 4016	4 P 4109 4019	4 P 1559 4012	4 P 2694 4014 ⁽²⁾	4 P 1509 4012		
200 A / B3	3 P	9573 3020						
	4 P	9573 4020						
250 A / B4	3 P	9573 3025	4109 3025	1559 3025				1599 0502
	4 P	9573 4025	4109 4025	1559 4025				
315 A / B4	3 P	9573 3031			3 P 2694 3021 ⁽²⁾	3 P 1509 3025	RS485 MODBUS communication 4825 0092	
	4 P	9573 4031						
400 A / B4	3 P	9573 3040					2 inputs / 2 outputs 1599 2001	
	4 P	9573 4040						
500 A / B5	3 P	9573 3050	4109 3050		3 P 2694 3051 ⁽²⁾	3 P 1509 3063	Ethernet communication 4825 0203	
	4 P	9573 4050	4109 4050					
630 A / B5	3 P	9573 3063	4109 3063				Ethernet communication + RS485 MODBUS gateway 4825 0204	
	4 P	9573 4063	4109 4063					
800 A / B6	3 P	9573 3080					Analogue outputs 4825 0093	
	4 P	9573 4080						
1000 A / B6	3 P	9573 3100					Pulse outputs 4825 0090	1599 0532
	4 P	9573 4100						
1250 A / B6	3 P	9573 3120	4109 3120					
	4 P	9573 4120	4109 4120					
1600 A / B7	3 P	9573 3160	4109 3160			1509 3160		
	4 P	9573 4160	4109 4160			4 P 1559 3160		
2000 A / B8	3 P	9573 3200						
	4 P	9573 4200						
2500 A / B8	3 P	9573 3250	(1)					included
	4 P	9573 4250						
3200 A / B8	3 P	9573 3320						
	4 P	9573 4320						

(1) See "Copper bar connection pieces".

(2) To fully shroud front, rear, top and bottom 4 references required.

To shroud front switch top and bottom 2 references required.

ATyS p

Rating (A) / Frame size	No. of poles	ATyS p	DC power supply	3 position padlocking	Key handle interlocking system	Door protective surround	Mounting spacers	Remote control interface		
125 A / B3	3 P	9573 3012	12 VDC/230 VAC 1599 5012	9599 0003 ⁽¹⁾	Using lock RONIS EL11AP in position 0 9599 1006 ⁽¹⁾	1539 0012	1 set of 2 spacers 1509 0001	D20 9599 2020 + RJ45 cable connection 1599 2009		
	4 P	9573 4012								
160 A / B3	3 P	9573 3016								
	4 P	9573 4016								
200 A / B3	3 P	9573 3020							24 VDC/230 VAC 1599 5112	
	4 P	9573 4020								
250 A / B4	3 P	9573 3025								48 VDC/230 VAC 1599 5212
	4 P	9573 4025								
315 A / B4	3 P	9573 3031								
	4 P	9573 4031								
400 A / B4	3 P	9573 3040								
	4 P	9573 4040								
500 A / B5	3 P	9573 3050	9599 0004 ⁽¹⁾	Using lock RONIS EL11AP in position 0 9599 1004 ⁽¹⁾	1539 0080					
	4 P	9573 4050								
630 A / B5	3 P	9573 3063								
	4 P	9573 4063								
800 A / B6	3 P	9573 3080								
	4 P	9573 4080								
1000 A / B6	3 P	9573 3100								
	4 P	9573 4100								
1250 A / B6	3 P	9573 3120								
	4 P	9573 4120								
1600 A / B7	3 P	9573 3160								
	4 P	9573 4160								
2000 A / B8	3 P	9573 3200								
	4 P	9573 4200								
2500 A / B8	3 P	9573 3250								
	4 P	9573 4250								
3200 A / B8	3 P	9573 3320								
	4 P	9573 4320								

(1) Factory mounting only.