



SURGYS® G70

Surge arrester - Type 2

for sites frequently struck by lightning

Electronic protection



sgys_067_a_1_cat

Function

The SURGYS® G70 surge arrester is designed to ensure reinforced protection of single-phase and three-phase networks. It acts against industrial operation surges and surges owing to lightning.

This type of Surge Protective Device is particularly recommended in case of heightened risk of nearby lightning strikes.

Advantages

Monobloc design

Easy to install.

Plug-in module

Quick maintenance on end-of-life modules.

Remote signalling

With the remote signalling contact (plug-in) you can upload the alert to a supervisory device.

End of life signal

Indicates internal components' end-of-life.

The solution for

- › Industry
- › All types of building (critical, non-critical)



Strong points

- › Monobloc design
- › Plug-in module
- › Remote signalling
- › End of life signal

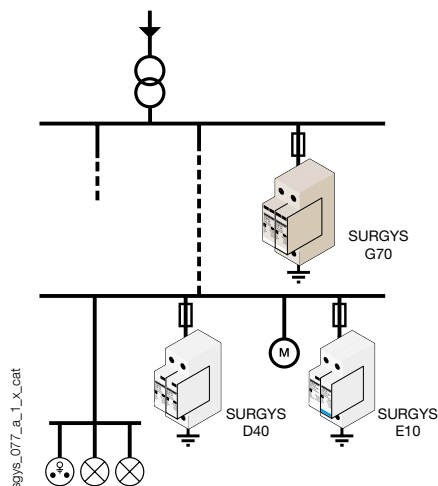
Compliance with standards

- › NF EN 61643-11
- › IEC 61643-11



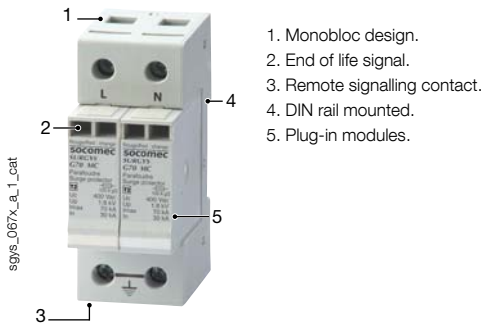
Applications

- Safety and lighting main switchboard.
- Safety main switchboard.
- Main switchboard of high power inverters.
- Distribution boards of remote sites.
- Protection of electrotechnical equipment such as motors, switching devices, control devices...



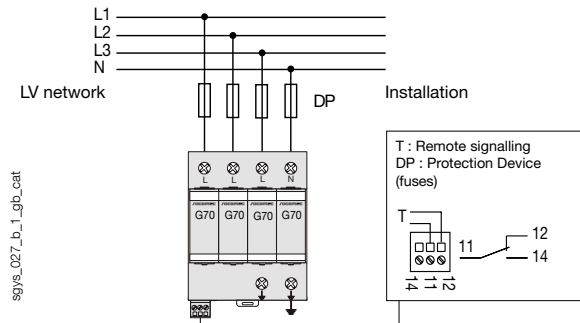
sgys_077_a_1_x_cat

Front panel



1. Monobloc design.
2. End of life signal.
3. Remote signalling contact.
4. DIN rail mounted.
5. Plug-in modules.

Connections



Specifications

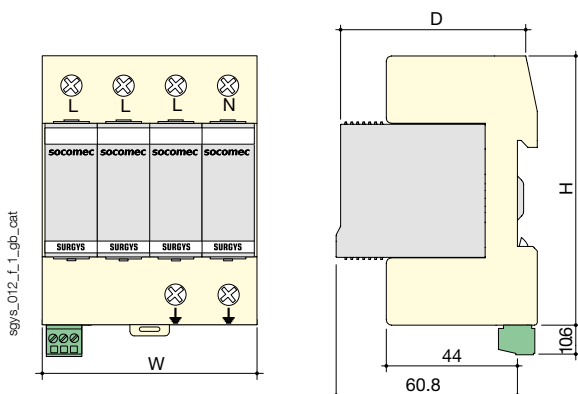
Mains	
Mains type	230 / 400 VAC
Neutral arrangements	TN-IT ⁽²⁾
Nominal voltage U_n	400 VAC
Max. voltage U_c	440 VAC
Temporary surge (TOV) 5 s U_T	580 VAC withstand
Temporary surge (TOV) 120 min U_T	770 VAC disconnection
Protection characteristics	
Level of protection U_p	1.8 kV
Max. current discharge (1 impulse 8/20 μ s) I_{max}	70 kA
Nominal discharge current (15 impulses 8/20 μ s) I_n	30 kA
Protection mode	Common
Associated characteristics	
Residual current I_c	< 1 mA
Response time t_r	< 25 ns
Follow current I_f	None
Admissible short-circuit current I_{scor}	25 kA
Recommended disconnectors	gG 100 A ⁽¹⁾ fuses
Type of disconnection indicator	mechanical
Number of disconnection indicators	2

Remote signalling contact	
Contact type	NO/NC
AC making capacity	0.5 A
DC making capacity	2 A
AC nominal voltage	250 VAC
DC nominal voltage	30 VDC
Sustained current	2 A
Connection type	through screw block
Max. cross-section of connections to terminals	1.5 mm ²
Operating conditions	
Operating temperature range	-40 ... +85°C
Storage temperature range	-40 ... +85°C

(1) Value compliant with article 534.1.5.3 of the NF C 15100 master templates can be used if a continuity of service backed up by the surge protection channel is desired.

(2) TT arrangement: please contact us.

Switch body



Type	monobloc module
Dimensions W x H x D - 2 pole device	36 x 90 x 67 mm
Dimensions W x H x D - 3 pole device	54 x 90 x 67 mm
Dimensions W x H x D - 4 pole device	72 x 90 x 67 mm
Casing protection index	IP20
Terminal block degree of protection	IP20
Case material	polycarbonate UL94-V0
Mains connection cross-section	4 ... 25 mm ²
Earthing connection cross-section	4 ... 25 mm ² (1)

(1) Min. cross-section of 10 mm² when lightning conductor present.

References

No. of poles	Number of adjacent modules	SURGYS® G70 Reference
2	2	4982 1720
3	3	4982 1730
4	4	4982 1740
Description of accessories		Reference
Replacement plug-in module m-G70		4982 0719