



Distribution blocks

Distribution system



Catalogue 2020

Single-pole distribution blocks



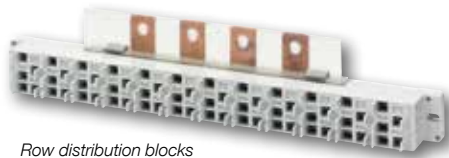
Catalogue 2020

Multi-pole distribution bar



Catalogue 2020

Distribution blocks for SOCOMEC power-switching devices



Catalogue 2020

Row distribution blocks

The solution for

- › Electrical distribution



Strong points

- › Extensive range
- › Easy integration
- › IEC and UL range

Compliance with standards

- › IEC 61439-1
- › IEC 60947-7-1



- › UL 1953
- › UL 1059



Function

SOCOME **distribution blocks** make it easy to connect conductors. They are mounted downstream of a load break switch, a changeover switch, a fuse switch or any protection device on the market.

Advantages

Extensive range

This extensive range has the right distribution system for every need:

- 13 single-pole models, 4 multi-pole models and 2 single-block models for copper and aluminium cables for either direct or plug connection
- 1 IP20 row distribution block
- 4 distribution block models for lug connection.

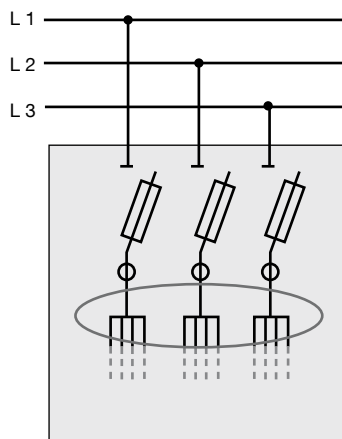
IEC and UL range

Our range of single-pole distribution blocks conforms to IEC and UL standards.

Easy integration

The compact size of the single-pole and multi-pole distributors for direct or plug connection ensures easy integration into the equipment.

Application



Catalogue 2020

IEC / UL single-pole distribution blocks

General features



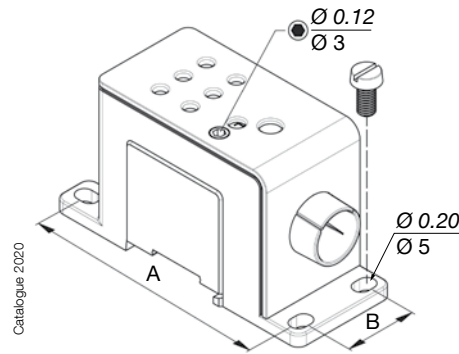
Catalogue 2020

- Material: tin-plated aluminium.
- For conductors: aluminium or copper.
- IP20 connection.
- L1, L2, L3, and N markings set by Allen key.
- DIN rail mounted.
- DIN rail attachment clip.
- Backplate mounted.
- Assembly clip for multiple distribution blocks.

References

| Type | Rating (A) | | | | References |
|--------|------------|----------|----------|----------|------------|
| | IEC | | UL | | |
| | Cu cable | Al cable | Cu cable | Al cable | |
| Type 1 | 80 | 63 | 85 | 65 | 54UL 1008 |
| Type 2 | 125 | 100 | 115 | 90 | 54UL 1012 |
| Type 3 | 175 | 135 | 175 | 135 | 54UL 1017 |
| Type 4 | 250 | 200 | 255 | 205 | 54UL 1025 |
| Type 5 | 415 | 36 | 380 | 310 | 54UL 1040 |

Dimensions



Catalogue 2020

| Type | Units | H x W x D | Mounting | |
|--------|-------|----------------------|----------|-------|
| | | | A | B |
| Type 1 | in | 1.93 x 1.417 x 3.524 | 3.118 | 0.914 |
| | mm | 49 x 36 x 89.5 | 79.2 | 23.2 |
| Type 2 | in | 1.93 x 1.417 x 3.524 | 3.118 | 0.914 |
| | mm | 49 x 36 x 89.5 | 79.2 | 23.2 |
| Type 3 | in | 2.09 x 1.417 x 3.898 | 3.492 | 0.914 |
| | mm | 53 x 36 x 99 | 88.7 | 23.2 |
| Type 4 | in | 2.39 x 2.126 x 4.488 | 4.063 | 1.622 |
| | mm | 60.7 x 54 x 114 | 103.7 | 41.2 |
| Type 5 | in | 2.39 x 2.126 x 4.488 | 4.063 | 1.622 |
| | mm | 60.7 x 54 x 114 | 103.7 | 41.2 |

Electrical wiring and characteristics

| Type | Solid/multi-core cables | | Flexible/crimped-plug cables | | Voltage according to IEC 60947-7-1 | | Voltage according to UL 1953 | | Short-circuit withstand | | | | | | | | | | | | |
|--------|------------------------------|-----------------|------------------------------|-----------------|------------------------------------|--------|------------------------------|--------|-------------------------|----------------------|-----------|------|------|------|------|-----|------|------|------|------|-----|
| | IEC connection | UL connection | IEC connection | UL connection | AC (V) | DC (V) | AC (V) | DC (V) | I _{cw} (kA) | I _{pk} (kA) | SCCR (kA) | | | | | | | | | | |
| Type 1 | 1 x 2.5 - 25 mm ² | 14 - 3 AWG | 1 x 2.5 - 25 mm ² | 14 - 3 AWG | 1000 | 1500 | 1000 | 1000 | 3 | 35 | 100 | | | | | | | | | | |
| | 6 x 2.5 - 10 mm ² | 14 - 8 AWG | 6 x 2.5 - 6 mm ² | 14 - 10 AWG | | | | | 6 | 36.1 | | | | | | | | | | | |
| Type 2 | 1 x 2.5 - 50 mm ² | 14 - 1 AWG | 1 x 2.5 - 35 mm ² | 14 - 2AWG | | | | | 1000 | 1500 | | 1000 | 1000 | 8.4 | 40.8 | 100 | | | | | |
| | 6 x 2.5 - 25 mm ² | 14 - 4 AWG | 6 x 2.5 - 16 mm ² | 14 - 6 AWG | | | | | | | | | | 14.4 | 47.7 | | | | | | |
| Type 3 | 1 x 2.5 - 70 mm ² | 14 - 2/0 AWG | 1 x 2.5 - 50 mm ² | 14 - 1/0 AWG | | | | | | | | | | 1000 | 1500 | | 1000 | 1000 | 28.8 | 57.2 | 100 |
| | 6 x 2.5 - 25 mm ² | 14 - 4 AWG | 6 x 2.5 - 16 mm ² | 14 - 6 AWG | | | | | | | | | | | | | | | | | |
| Type 4 | 1 x 35 - 120 mm ² | 2 - 250 kcmil | 1 x 35 - 95 mm ² | 2 - 4/0 AWG | 1000 | 1500 | 1000 | 1000 | | | | | | | | | | | | 100 | |
| | 6 x 2.5 - 35 mm ² | 14 - 2 AWG | 6 x 2.5 - 25 mm ² | 14 - 4 AWG | | | | | | | | | | | | | | | | | |
| Type 5 | 1 x 70 - 240 mm ² | 2/0 - 500 kcmil | 1 x 70 - 185 mm ² | 2/0 - 400 kcmil | | | | | 1000 | 1500 | 1000 | 1000 | | | | | | | 100 | | |
| | 6 x 2.5 - 35 mm ² | 14 - 8 AWG | 6 x 2.5 - 25 mm ² | 14 - 4 AWG | | | | | | | | | | | | | | | | | |

Distribution blocks

Distribution system

Single-pole IEC/UR distribution blocks

General features



- Material: coated aluminium type 1 to type 5, copper for type 6 to type 8.
- For conductors: Aluminium or copper type 1 to type 5, copper for type 6 to type 8.
- IP20 connection.
- DIN rail mounted.
- Backplate mounted.

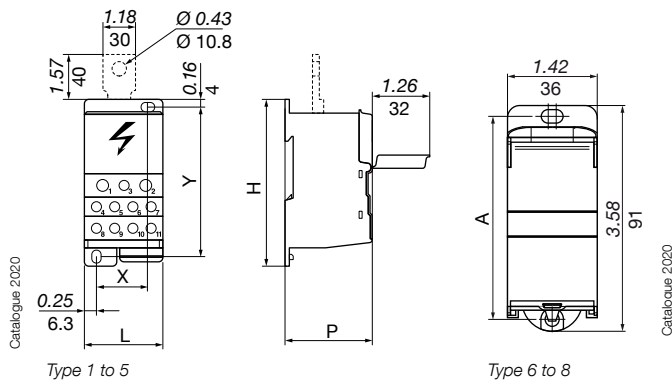
References

| Type | Rating (A) | | | | References |
|--------|------------|----------|----------|----------|------------|
| | IEC | | UR | | |
| | Cu cable | Al cable | Cu cable | Al cable | |
| Type 1 | 125 | 100 | 115 | 90 | 5411 1012 |
| Type 2 | 125 | 100 | 115 | 90 | 5411 1013 |
| Type 3 | 175 | 135 | 175 | 135 | 5411 1017 |
| Type 4 | 250 | 200 | 255 | - | 5411 1025 |
| Type 5 | 400 | 300 | - | - | 5411 1040 |
| Type 6 | 125 | - | - | - | 5411 1011 |
| Type 7 | 175 | - | - | - | 5411 1016 |
| Type 8 | 250 | - | - | - | 5411 0124 |

| Accessories | | References |
|-----------------------|--|------------|
| Connection for type 4 | | 5410 0025 |
| Connection for type 5 | | 5410 0040 |

Attachments for mounting directly to load break switching device terminal

Dimensions



Distribution blocks with direct connection or IP20 jacks that plug into symmetrical DIN rail.

| Type | Units | Dimensions H x W x D | Mounting | |
|--------|-------|-------------------------|----------|-------|
| | | | A | B |
| Type 1 | in | 2.91 x 1.06 x 1.81 | 2.44 | 0.157 |
| | mm | 74 x 27 x 46 | 62 | 4 |
| Type 2 | in | 2.80 x 1.77 x 1.69 | 2.386 | 0.685 |
| | mm | 71 x 45 x 43 | 60.6 | 17.4 |
| Type 3 | in | 2.80 x 1.77 x 1.69 | 2.386 | 0.685 |
| | mm | 71 x 45 x 43 | 60.6 | 17.4 |
| Type 4 | in | 3.74 x 1.75 x 1.93 | 3.836 | 1.165 |
| | mm | 95 x 44.5 x 49 | 86 | 29.6 |
| Type 5 | in | 3.74 x 1.75 x 1.93 | 3.836 | 1.165 |
| | mm | 95 x 44.5 x 49 | 86 | 29.6 |
| Type 6 | in | 3.58 x 1.06 x 2.01 | 3.22 | - |
| | mm | 91 x 27 x 51 | 81.7 | - |
| Type 7 | in | 3.58 x 1.42 x 2.01 | 3.22 | - |
| | mm | 91 x 36 x 51 | 81.7 | - |
| Type 8 | in | 3.58 x 1.77 x 2.01 | 3.22 | - |
| | mm | 91 x 45 x 51 | 81.7 | - |

Electrical wiring and characteristics

| Type | Solid/multi-core cables | | Flexible/cripped-plug cables | | Voltage according to IEC 60947-7-1 | | Voltage according to UL 1059 | | Short-circuit withstand | |
|--------|-------------------------------|-------------------|-------------------------------|-----------------|------------------------------------|--------|------------------------------|--------|-------------------------|----------------------|
| | IEC connection | UL connection | IEC connection | UL connection | AC (V) | DC (V) | AC (V) | DC (V) | I _{cw} (kA) | I _{pk} (kA) |
| Type 1 | 1 x 10 - 35 mm ² | 1 x 8 - 2 AWG | 1 x 10 - 35 mm ² | 1 x 8 - 2 AWG | 1000 | 1500 | 600 | 600 | 4.2 | 30 |
| | 1 x 2.5 - 25 mm ² | 1 x 14 - 4 AWG | 1 x 2.5 - 16 mm ² | 1 x 14 - 6 AWG | | | | | | |
| | 6 x 2.5 - 25 mm ² | 6 x 14 - 4 AWG | 6 x 2.5 - 16 mm ² | 6 x 14 - 6 AWG | | | | | | |
| Type 2 | 1 x 10 - 35 mm ² | 1 x 8 - 2 AWG | 1 x 10 - 35 mm ² | 1 x 8 - 2 AWG | | | | | | |
| | 10 x 2.5 - 16 mm ² | 10 x 14 - 4 AWG | 10 x 2.5 - 10 mm ² | 10 x 14 - 6 AWG | | | | | | |
| | 1 x 10 - 70 mm ² | 1 x 8 - 2/0 AWG | 1 x 10 - 50 mm ² | 1 x 8 - 1/0 AWG | | | | | | |
| Type 3 | 10 x 2.5 - 16 mm ² | 10 x 14 - 4 AWG | 10 x 2.5 - 10 mm ² | 10 x 14 - 6 AWG | | | | | | |
| | 1 x 35 - 120 mm ² | 1 x 2 - 250 kcmil | 1 x 35 - 95 mm ² | 1 x 2 - 4/0 AWG | | | | | | |
| | 2 x 2.5 - 35 mm ² | 2 x 14/2 AWG | 2 x 2.5 - 25 mm ² | 2 x 14 - 4 AWG | | | | | | |
| Type 4 | 5 x 2.5 - 16 mm ² | 5 x 14 - 6 AWG | 5 x 2.5 - 16 mm ² | 5 x 14 - 6 AWG | | | | | | |
| | 4 x 2.5 - 10 mm ² | 4 x 14 - 8 AWG | 4 x 2.5 - 10 mm ² | 4 x 14 - 8 AWG | | | | | | |
| | 1 x 95 - 185 mm ² | - | 1 x 95 - 150 mm ² | - | | | | | | |
| Type 5 | 2 x 2.5 - 35 mm ² | - | 2 x 2.5 - 25 mm ² | - | | | | | | |
| | 5 x 2.5 - 16 mm ² | - | 5 x 2.5 - 16 mm ² | - | | | | | | |
| | 4 x 2.5 - 10 mm ² | - | 4 x 2.5 - 10 mm ² | - | | | | | | |
| Type 6 | 2 x 10 - 35 mm ² | - | 2 x 6 - 25 mm ² | - | | | | | | |
| | 2 x 2.5 - 25 mm ² | - | 2 x 1.5 - 16 mm ² | - | | | | | | |
| | 6 x 1.5 - 16 mm ² | - | 6 x 1.5 - 10 mm ² | - | | | | | | |
| Type 7 | 2 x 25 - 70 mm ² | - | 2 x 16 - 50 mm ² | - | | | | | | |
| | 3 x 2.5 - 25 mm ² | - | 3 x 1.5 - 16 mm ² | - | | | | | | |
| | 8 x 1.5 - 16 mm ² | - | 8 x 1.5 - 10 mm ² | - | | | | | | |
| Type 8 | 1 x 35 - 120 mm ² | - | 1 x 25 - 95 mm ² | - | | | | | | |
| | 1 x 1.5 - 50 mm ² | - | 1 x 1.5 - 35 mm ² | - | | | | | | |
| | 4 x 1.5 - 16 mm ² | - | 4 x 1.5 - 10 mm ² | - | | | | | | |
| | 8 x 2.5 - 25 mm ² | - | 8 x 2.5 - 16 mm ² | - | | | | | 14.4 | 60 |

Multi-pole distribution blocks with IEC bars

General features



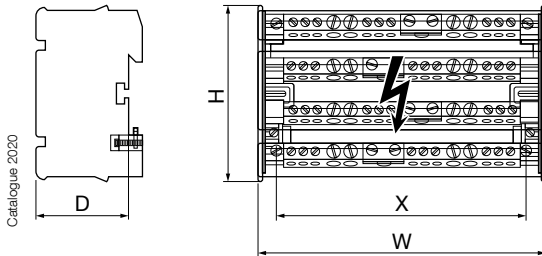
- Material: uncoated brass.
- For conductors: copper.
- DIN rail mounted.
- DIN rail attachment clip.
- Backplate mounted.
- Additional insulated bars.
- Reversible cap.



References

| Type | Rating (A) | N° of poles | N° of connections | References |
|-----------------|------------|-------------|-------------------|------------------|
| Type 1 | 100 | 3/4 | 7 | 5421 4010 |
| Type 2 | 125 | | 12 | 5421 4011 |
| Type 3 | 125 | | 15 | 5421 4012 |
| Type 4 | 1600 | | 12 | 5421 4016 |
| Additional lugs | | | | References |
| 7 connections | | | | 5421 1010 |
| 12 connections | | | | 5421 1012 |
| 15 connections | | | | 5421 1013 |

Dimensions



| Type | Units | H x W x D | Mounting X |
|--------|-------|----------------------|------------|
| Type 1 | in | 4.11 x 2.84 x 1.96 | 2.126 |
| | mm | 104.5 x 72.2 x 49.7 | 54 |
| Type 2 | in | 4.11 x 5.01 x 1.96 | 4.291 |
| | mm | 104.5 x 127.2 x 49.7 | 109 |
| Type 3 | in | 4.11 x 6.90 x 1.96 | 4.646 |
| | mm | 104.5 x 175.2 x 49.7 | 118 |
| Type 4 | in | 4.11 x 6.43 x 1.96 | 4.055 |
| | mm | 104.5 x 163.2 x 49.7 | 103 |

Electrical wiring and characteristics

| Type | Solid/multi-core cables | Flexible/crimped-plug cables | Voltage according to IEC 60947-7-1 | | Short-circuit withstand | |
|-------------------------------|-------------------------------|------------------------------|------------------------------------|--------|-------------------------|----------------------|
| | | | AC (V) | DC (V) | I _{cw} (kA) | I _{pk} (kA) |
| Type 1 | 2 x 2.5 / 25 mm ² | 2 x 1.5 / 16 mm ² | 690 | 1000 | 3 | 24 |
| | 5 x 1.5 / 16 mm ² | 5 x 1.5 / 10 mm ² | | | | |
| Type 2 | 1 x 10 / 35 mm ² | 1 x 4 / 25 mm ² | | | | |
| | 7 x 2.5 / 25 mm ² | 7 x 1.5 / 16 mm ² | | | | |
| Type 3 | 4 x 1.5 / 16 mm ² | 4 x 1.5 / 10 mm ² | | | | |
| | 1 x 10 / 35 mm ² | 1 x 6 / 35 mm ² | | | 4.2 | 28 |
| | 3 x 6 / 35 mm ² | 3 x 4 / 25 mm ² | | | | |
| 11 x 1.5 / 16 mm ² | 11 x 1.5 / 10 mm ² | | | | | |
| Type 4 | 1 x 25 / 70 mm ² | 1 x 16 / 50 mm ² | 8.4 | 36 | | |
| | 3 x 10 / 35 mm ² | 3 x 4 / 25 mm ² | | | | |
| | 8 x 2.5 / 25 mm ² | 8 x 1.5 / 16 mm ² | | | | |

Earthing lug

References

| Mounting by | N° of outgoing circuits per section (mm ²) | Material | L (mm) | To be ordered in multiples | Reference |
|--------------|--|----------|--------|----------------------------|------------------|
| 2x M4 screws | 10 x 16 + 2 x 35 | Brass | 120 | 10 | 5414 0120 |
| 2x M6 screws | 41 x 16 + 2 x 35 | Brass | 470 | 10 | 5414 0470 |



Distribution blocks

Distribution system

IEC / UR single-block multi-pole distribution blocks

General features



Catalogue 2020

Single-block multi-pole distribution block
175 A 3 P

- Material: uncoated brass for 125 A, tin-plated copper for 175 A.
- For conductors: aluminium or copper (175 only).
- IP20 connection.
- DIN rail mounted.

References

| Rating (A) | N° of poles | Rating (A) | | | | References |
|------------|-------------|------------|----------|----------|----------|------------|
| | | IEC | | UL | | |
| | | Cu cable | Al cable | Cu cable | Al cable | |
| 125 | 4 | 125 | - | - | - | 5411 4112 |
| 175 | 3 | 175 | 135 | 175 | 135 | 5411 3017 |

Dimensions

| Rating (A) | Units | H x W x D | Mounting | |
|------------|-------|--------------------|----------|---------------|
| | | | A | B |
| 125 | in | 2.93 x 3.86 x 1.93 | 2.48 | 2.323 - 2.795 |
| | mm | 74.5 x 98 x 49 | 63 | 59 - 71 |
| 175 | in | 2.8 x 3.15 x 1.69 | 2.382 | 2.07 |
| | mm | 71 x 80 x 43 | 60.6 | 52.5 |

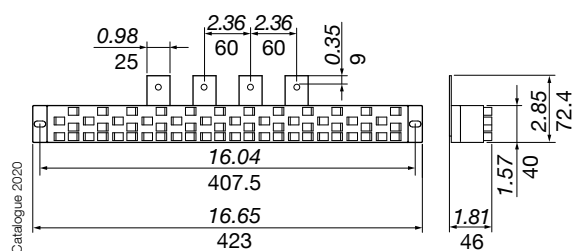
Electrical wiring and characteristics

| Rating (A) | Solid/multi-core cables | | Flexible/crimped-plug cables | | Voltage according to IEC 60947-7-1 | | Voltage according to UL 1059 | | Short-circuit withstand | |
|------------|------------------------------|-----------------|------------------------------|-----------------|------------------------------------|--------|------------------------------|--------|-------------------------|----------------------|
| | IEC connection | UL connection | IEC connection | UL connection | AC (V) | DC (V) | AC (V) | DC (V) | I _{cc} (kA) | I _{pk} (kA) |
| 125 | 1 x 6 - 35 mm ² | - | 1 x 6 - 25 mm ² | - | 690 | 1000 | 600 | 600 | 4.2 | 25 |
| | 2 x 4 - 16 mm ² | | 2 x 4 - 10 mm ² | | | | | | | |
| | 5 x 1.5 - 6 mm ² | | 5 x 1.5 - 6 mm ² | | | | | | | |
| 175 | 1 x 10 - 70 mm ² | 1 x 8 - 2/0 AWG | 1 x 10 - 50 mm ² | 1 x 8 - 1/0 AWG | 1000 | 1500 | | | 11 | 30 |
| | 6 x 2.5 - 16 mm ² | 6 x 14 - 4 AWG | 6 x 2.5 - 10 mm ² | 6 x 14 - 6 AWG | | | | | | |

Distribution row with IP20 connectors



Catalogue 2020



References

| Rating (A) | Length | With connecting cords ⁽¹⁾ | I _{cc} (kA rms) | Reference |
|--------------------|--------|--------------------------------------|--------------------------|-----------|
| 250 ⁽²⁾ | 1 row | Yes | 10 | 5420 2426 |
| 250 ⁽²⁾ | 1 row | No | 10 | 5421 2426 |

(1) Supplied with 6 mm² connecting cords, L = 120 mm, 12 black connectors, 12 blue connectors.
(2) Outgoing circuits should be split across the full number of outputs

Accessories

Cables

| Rating (A) | Cable type | Length (mm) | Colour | To be ordered in multiples | Reference |
|------------|--------------------|-------------|--------|----------------------------|-----------|
| 40 | 6 mm ² | 120 | Blue | 10 | 5421 1006 |
| 40 | 6 mm ² | 120 | Black | 10 | 5421 1016 |
| 40 | 6 mm ² | 320 | Blue | 10 | 5421 1106 |
| 40 | 6 mm ² | 320 | Black | 10 | 5421 1116 |
| 63 | 10 mm ² | 320 | Blue | 10 | 5421 1101 |
| 63 | 10 mm ² | 320 | Black | 10 | 5421 1111 |

Plug-in connectors

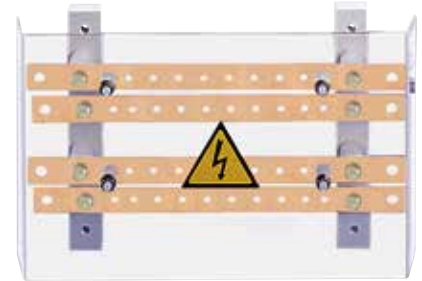
| Connector type | To be ordered in multiples | Reference |
|---------------------------|----------------------------|-----------|
| 1.5 - 2.5 mm ² | 20 | 5421 0025 |
| 4 - 6 mm ² | 20 | 5421 0125 |

Lug connection

Multi-pole distribution block

References

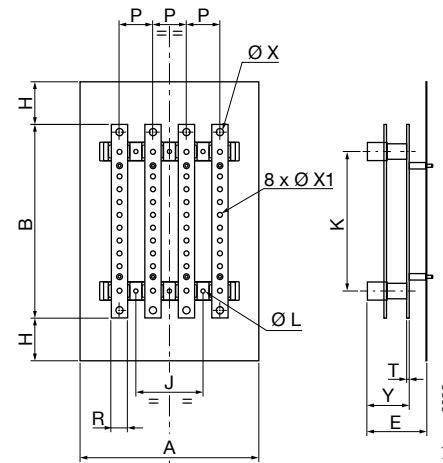
| Rating (A) | N° of poles | I _{cc} (kA rms) | N° of outgoing circuits per section (mm ²) | Reference |
|------------|-------------|--------------------------|--|-----------|
| 160 | 3 P | 10 | 2 x 95 + 8 x 25 | 5412 3016 |
| 160 | 4 P | 10 | 2 x 95 + 8 x 25 | 5412 4016 |
| 250 | 3 P | 15 | 2 x 150 + 8 x 50 | 5412 3025 |
| 250 | 4 P | 15 | 2 x 150 + 8 x 50 | 5412 4025 |
| 400 | 3 P | 21 | 2 x 240 + 8 x 95 | 5412 3040 |
| 400 | 4 P | 21 | 2 x 240 + 8 x 95 | 5412 4040 |
| 630 | 3 P | 21 | 2 x 300 + 8 x 150 | 5412 3063 |
| 630 | 4 P | 21 | 2 x 300 + 8 x 150 | 5412 4063 |



Catalogue 2020

Dimensions (mm)

| Rating (A) | N° of poles | Units | A | B | E | H | J | K | Ø L | P | R | T | Ø X | Ø X1 | Y |
|------------|-------------|-------|-------|-------|------|------|------|-------|------|------|------|------|------|------|------|
| 160 | 3 P | in | 6.06 | 11.26 | 2.87 | 1.83 | 4.80 | 8.15 | 0.26 | 1.42 | 0.79 | 0.16 | 0.35 | 0.24 | 2.13 |
| | | mm | 154 | 286 | 73 | 46.5 | 122 | 207 | 6.5 | 36 | 20 | 4 | 9 | 6 | 54 |
| 160 | 4 P | in | 7.48 | 11.26 | 2.87 | 1.83 | 6.22 | 8.15 | 0.26 | 1.42 | 0.79 | 0.16 | 0.35 | 0.24 | 2.13 |
| | | mm | 190 | 286 | 73 | 46.5 | 158 | 207 | 6.5 | 36 | 20 | 4 | 9 | 6 | 54 |
| 250 | 3 P | in | 8.27 | 12.09 | 3.27 | 2.26 | 1.97 | 8.7 | 0.28 | 1.97 | 0.98 | 0.16 | 0.43 | 0.31 | 2.20 |
| | | mm | 210 | 307 | 83 | 57.5 | 50 | 222 | 7 | 50 | 25 | 4 | 11 | 8 | 56 |
| 250 | 4 P | in | 8.27 | 12.09 | 3.27 | 2.26 | 1.97 | 8.7 | 0.28 | 1.97 | 0.98 | 0.16 | 0.43 | 0.31 | 2.20 |
| | | mm | 260 | 307 | 83 | 57.5 | 100 | 222 | 7 | 50 | 25 | 4 | 11 | 8 | 56 |
| 400 | 3 P | in | 11.06 | 14.76 | 4.57 | 3.25 | 2.56 | 10.63 | 0.31 | 2.56 | 1.26 | 0.20 | 0.57 | 0.33 | 3.23 |
| | | mm | 281 | 375 | 116 | 82.5 | 65 | 270 | 8 | 65 | 32 | 5 | 14.5 | 8.5 | 82 |
| 400 | 4 P | in | 13.62 | 14.76 | 4.57 | 3.25 | 5.12 | 10.63 | 0.31 | 2.56 | 1.26 | 0.20 | 0.57 | 0.33 | 3.23 |
| | | mm | 346 | 375 | 116 | 82.5 | 130 | 270 | 8 | 65 | 32 | 5 | 14.5 | 8.5 | 82 |
| 630 | 3 P | in | 10.67 | 17.24 | 4.61 | 3.56 | 2.56 | 13.11 | 0.31 | 2.56 | 1.57 | 0.24 | 0.57 | 0.41 | 3.27 |
| | | mm | 271 | 438 | 117 | 90.5 | 65 | 333 | 8 | 65 | 40 | 6 | 14.5 | 10.5 | 83 |
| 630 | 4 P | in | 13.62 | 17.24 | 4.61 | 3.56 | 5.12 | 13.11 | 0.31 | 2.56 | 1.57 | 0.24 | 0.57 | 0.41 | 3.27 |
| | | mm | 346 | 438 | 117 | 90.5 | 130 | 333 | 8 | 65 | 40 | 6 | 14.5 | 10.5 | 83 |



Catalogue 2020

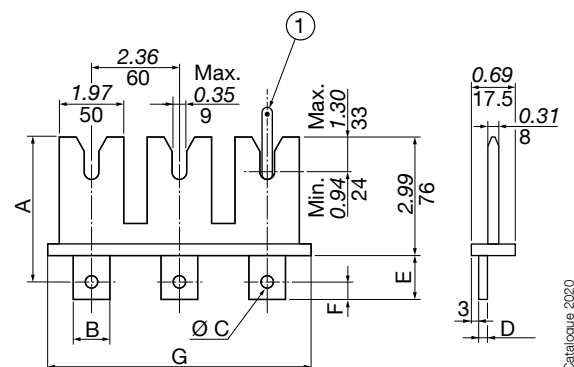
Plug-in for 5 to 6.3 mm bars

References

| Rating (A) | N° of poles | Reference |
|------------|-------------|-----------|
| 125/160 | 3 P | 3699 3P16 |
| | 4 P | 3699 6P16 |
| 250/400 | 3 P | 3699 3P39 |
| | 4 P | 3699 6P39 |
| 630/800 | 3 P | 3699 3P80 |
| | 4 P | 3699 6P80 |

Dimensions (mm)

| Rating (A) | N° of poles | Units | A | B | C | D | E | F | G |
|------------|-------------|-------|-------|------|-----|------|------|------|------|
| 125/160 | 3 P | in | 3.90 | 0.79 | M8 | 0.12 | 0.91 | 0.39 | 7.32 |
| | | mm | 99 | 20 | | 3 | 23 | 10 | 186 |
| | 4 P | in | 3.90 | 0.79 | | 0.12 | 0.91 | 0.39 | 9.76 |
| | | mm | 99 | 20 | | 3 | 23 | 10 | 248 |
| 250/400 | 3 P | in | 4 | 0.79 | M10 | 0.16 | 1.10 | 0.49 | 7.32 |
| | | mm | 101.5 | 25 | | 4 | 28 | 12.5 | 186 |
| | 4 P | in | 4 | 0.98 | | 0.16 | 1.10 | 0.49 | 9.76 |
| | | mm | 101.5 | 25 | | 4 | 28 | 12.5 | 248 |
| 630/800 | 3 P | in | 4 | 0.98 | M10 | 0.16 | 1.10 | 0.49 | 7.32 |
| | | mm | 101.5 | 25 | | 4 | 28 | 12.5 | 186 |
| | 4 P | in | 4 | 0.98 | | 0.16 | 1.10 | 0.49 | 9.76 |
| | | mm | 101.5 | 25 | | 4 | 28 | 12.5 | 248 |



1. Bar thickness 5 to 6.3 mm.

Catalogue 2020

Distribution blocks

Distribution system

Lug connection (cont.)

Split throw multi-pole distribution block

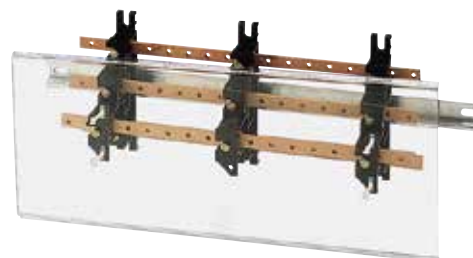
References

| Rating (A) | L (mm) | N° of poles | I _{cc} (kA rms) | No of brackets | Distribution block | |
|------------|--------|-------------|--------------------------|----------------|--------------------|----------------------------|
| | | | | | Reference | Protective cover Reference |
| 160 | 270 | 4 P | 25 | 2 | 5028 0421 | 5028 0411 |
| 160 | 420 | 4 P | 17 | 2 | 5028 0451 | 5028 0412 |
| 160 | 620 | 4 P | 20 | 3 | 5028 0471 | 5028 0413 |
| 250 | 270 | 4 P | 30 | 2 | 5028 0423 | 5028 0411 |
| 250 | 420 | 4 P | 22 | 2 | 5028 0453 | 5028 0412 |
| 250 | 620 | 4 P | 18 | 3 | 5028 0473 | 5028 0413 |
| 400 | 270 | 4 P | 24 | 2 | 5028 0425 | 5028 0411 |
| 400 | 420 | 4 P | 21 | 2 | 5028 0455 | 5028 0412 |
| 400 | 620 | 4 P | 13 | 3 | 5028 0475 | 5028 0413 |

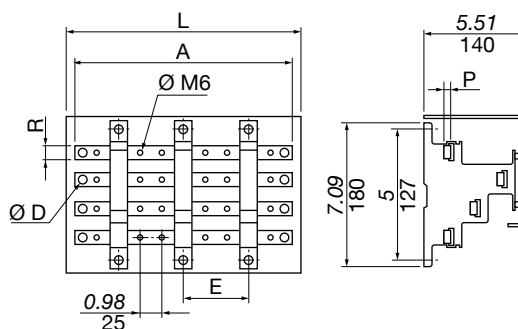
| Type | Cond. | Reference |
|--------------------------------------|-------|-----------|
| Spacer adaptor for protection covers | 1 | 5028 0415 |

Dimensions (mm)

| Rating (A) | N° of feeders | Units | A | Ø D | E | L | P | R |
|------------|---------------|-------|-------|------|-------|-------|------|------|
| 160 | 9 | in | 9.84 | 0.31 | 5.91 | 10.63 | 0.20 | 0.59 |
| | | mm | 250 | 8 | 150 | 270 | 5 | 15 |
| | 15 | in | 15.75 | 0.31 | 11.81 | 16.54 | 0.20 | 0.59 |
| | | mm | 400 | 8 | 300 | 420 | 5 | 15 |
| | 21 | in | 23.62 | 0.31 | 9.84 | 24.41 | 0.20 | 0.59 |
| | | mm | 600 | 8 | 250 | 620 | 5 | 15 |
| 250 | 9 | in | 9.84 | 0.39 | 5.91 | 10.63 | 0.20 | 0.79 |
| | | mm | 250 | 10 | 150 | 270 | 5 | 20 |
| | 15 | in | 15.75 | 0.39 | 11.81 | 16.54 | 0.20 | 0.79 |
| | | mm | 400 | 10 | 300 | 420 | 5 | 20 |
| | 21 | in | 23.62 | 0.39 | 9.84 | 24.41 | 0.20 | 0.79 |
| | | mm | 600 | 10 | 250 | 620 | 5 | 20 |
| 400 | 8 | in | 8.86 | 0.47 | 5.91 | 10.63 | 0.20 | 1.26 |
| | | mm | 225 | 12 | 150 | 270 | 5 | 32 |
| | 14 | in | 14.76 | 0.47 | 11.81 | 16.54 | 0.20 | 1.26 |
| | | mm | 375 | 12 | 300 | 420 | 5 | 32 |
| | 20 | in | 24.41 | 0.47 | 9.84 | 24.41 | 0.20 | 1.26 |
| | | mm | 620 | 12 | 250 | 620 | 5 | 32 |



repar_012_b_1_cat



Split throw distribution block, with threaded holes, plugs into symmetrical DIN rail. Comes pre-mounted and without protective cap.

Catalogue 2020

Disconnectable neutral

References

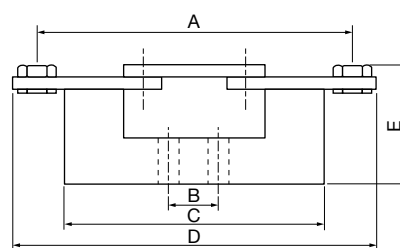
| Rating (A) | Connection type | Reference |
|------------|-----------------|-----------|
| 160 | Lug connection | NB16 0000 |
| 250 | Lug connection | NB25 0000 |
| 400 | Lug connection | NB40 0000 |
| 630 | Lug connection | NB63 0000 |

Dimensions (mm)

| Rating (A) | Units | A | B | C | D | E | Max. width |
|------------|-------|------|------|------|------|------|------------|
| 160 | in | 3.94 | 0.98 | 3.35 | 4.61 | 1.77 | 1.26 |
| | mm | 100 | 25 | 85 | 117 | 45 | 32 |
| 250 | in | 5.91 | 0.98 | 4.72 | 6.81 | 1.77 | 1.26 |
| | mm | 150 | 25 | 120 | 173 | 45 | 32 |
| 400 | in | 6.93 | 0.98 | 5.91 | 7.87 | 2.56 | 2.17 |
| | mm | 176 | 25 | 150 | 200 | 65 | 55 |
| 630 | in | 8.27 | 0.98 | 6.30 | 9.45 | 2.56 | 2.95 |
| | mm | 210 | 25 | 160 | 240 | 65 | 75 |



repar_030_a_2_cat



shunt_012_a_1_x_cat

Multi-pole distribution block for SIRCO

References

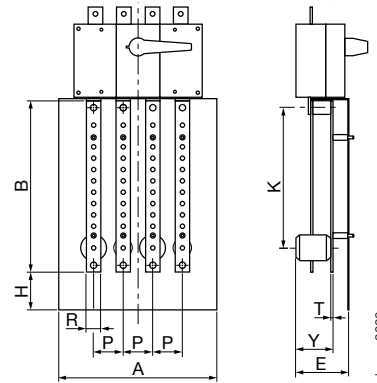
| Rating (A) | N° of poles | I _{cc} (kA rms) | N° of outgoing circuits per section (mm ²) | Reference |
|------------|-------------|--------------------------|--|-----------|
| 160 | 3 P | 10 | 1 x 95 + 8 x 25 | 5411 3016 |
| | 4 P | 10 | 1 x 95 + 8 x 25 | 5411 4016 |
| 250 | 3 P | 15 | 1 x 150 + 8 x 50 | 5411 3025 |
| | 4 P | 15 | 1 x 150 + 8 x 50 | 5411 4025 |
| 400 | 3 P | 21 | 1 x 240 + 8 x 95 | 5411 3040 |
| | 4 P | 21 | 1 x 240 + 8 x 95 | 5411 4040 |
| 630 | 3 P | 21 | 1 x 300 + 8 x 150 | 5411 3063 |
| | 4 P | 21 | 1 x 300 + 8 x 150 | 5411 4063 |

Dimensions (mm)

| Rating (A) | N° of poles | Units | A | B | E | H | K | P | R | T | Y |
|------------|-------------|-------|-------|-------|------|------|-------|------|------|------|------|
| 160 | 3 P | in | 6.06 | 11.26 | 2.87 | 1.83 | 10.30 | 1.42 | 0.79 | 0.16 | 2.13 |
| | | mm | 154 | 286 | 73 | 46.5 | 261.5 | 36 | 20 | 4 | 54 |
| | 4 P | in | 7.48 | 11.26 | 2.87 | 1.83 | 10.30 | 1.42 | 0.79 | 0.16 | 2.13 |
| | | mm | 190 | 286 | 73 | 46.5 | 261.4 | 36 | 20 | 4 | 54 |
| 250 | 3 P | in | 8.27 | 12.09 | 3.27 | 2.26 | 10.98 | 1.97 | 0.98 | 0.16 | 2.20 |
| | | mm | 210 | 307 | 83 | 57.5 | 279 | 50 | 25 | 4 | 56 |
| | 4 P | in | 10.24 | 12.09 | 3.27 | 2.26 | 10.98 | 1.97 | 0.98 | 0.16 | 2.20 |
| | | mm | 260 | 307 | 83 | 57.5 | 279 | 50 | 25 | 4 | 56 |
| 400 | 3 P | in | 11.06 | 14.76 | 4.57 | 3.25 | 13.39 | 2.56 | 1.26 | 0.20 | 3.23 |
| | | mm | 281 | 375 | 116 | 82.5 | 340 | 65 | 32 | 5 | 82 |
| | 4 P | in | 13.62 | 14.76 | 4.57 | 3.25 | 13.39 | 2.56 | 1.26 | 0.20 | 3.23 |
| | | mm | 346 | 375 | 116 | 82.5 | 340 | 65 | 32 | 5 | 82 |
| 630 | 3 P | in | 10.67 | 17.24 | 4.61 | 3.56 | 16.16 | 2.56 | 1.57 | 0.24 | 3.27 |
| | | mm | 271 | 438 | 117 | 90.5 | 410.5 | 65 | 40 | 6 | 83 |
| | 4 P | in | 13.62 | 17.24 | 4.61 | 3.56 | 16.16 | 2.56 | 1.57 | 0.24 | 3.27 |
| | | mm | 346 | 438 | 117 | 90.5 | 410.5 | 65 | 40 | 6 | 83 |



repar_020_b_1_cat



Distribution block with lug connection, frontal protection against non-intentional contact (load break switching device not included).

Catalogue 2020

Multi-pole distribution block for FUSERBLOC and SIRCO VM2

References

| Rating (A) | Fuse size | N° of poles | Device | N° of outgoing circuits per section (mm ²) | Reference |
|-------------|------------|-------------|-----------|--|-----------|
| 100/125/160 | 22x58 / 00 | 3 P | FUSERBLOC | 10x16 + 2x35 + 3xM6 | 5413 3016 |
| | | 4 P | | 10x16 + 2x35 + 3xM6 | 5413 4016 |
| 160 | 0 | 3 P | | 10x16 + 2x35 + 3xM6 | 5413 3017 |
| | 0 | 4 P | | 10x16 + 2x35 + 3xM6 | 5413 4017 |
| 250 | 1 | 3 P | | 11 x M8 | 5413 3025 |
| | 1 | 4 P | | 11 x M8 | 5413 4025 |
| 400 | 2 | 3 P | 11 x M8 | 5413 3040 ⁽¹⁾ | |
| | 2 | 4 P | 11 x M8 | 5413 4040 ⁽¹⁾ | |
| 160 / 200 | | 3 P | SIRCO VM2 | 10x16 + 2x35 + 3xM6 | 5413 3020 |
| | | 4 P | | 10x16 + 2x35 + 3xM6 | 5413 4020 |

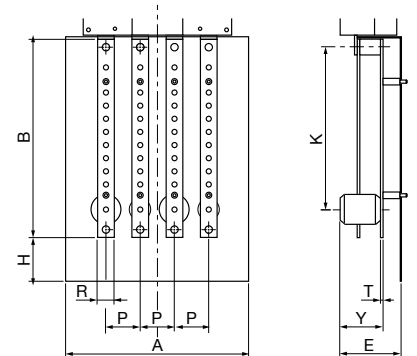
⁽¹⁾ *Distribution block compatible only with 400A Fuserbloc fuse reference 3xxx xx39

Dimensions (mm)

| Rating (A) | N° of poles | Device | Units | A | B | E | H | K | P | R | T | Y |
|-----------------|-------------|-----------|-------|-------|-------|------|-------|------|------|------|------|------|
| 100 / 125 / 160 | 3 P | FUSERBLOC | in | 4.33 | 10.24 | 2.40 | 0.79 | 9.17 | 1.42 | 0.79 | 0.16 | 1.54 |
| | | | mm | 110 | 260 | 61 | 20 | 233 | 36 | 20 | 4 | 39 |
| | 4 P | | in | 5.71 | 10.24 | 2.40 | 0.79 | 9.17 | 1.42 | 0.79 | 0.16 | 1.54 |
| | | | mm | 145 | 260 | 61 | 20 | 233 | 36 | 20 | 4 | 39 |
| 160 | 3 P | | in | 5.91 | 10.24 | 2.40 | 0.79 | 9.17 | 1.97 | 0.79 | 0.16 | 1.54 |
| | | | mm | 150 | 260 | 61 | 20 | 233 | 50 | 20 | 4 | 39 |
| | 4 P | in | 7.87 | 10.24 | 2.40 | 0.79 | 9.17 | 1.97 | 0.79 | 0.16 | 1.54 | |
| | | mm | 200 | 260 | 61 | 20 | 233 | 50 | 20 | 4 | 39 | |
| 250 | 3 P | in | 7.68 | 13.39 | 2.64 | 0.59 | 11.81 | 2.36 | 1.26 | 0.20 | 1.77 | |
| | | mm | 185 | 340 | 67 | 15 | 300 | 60 | 32 | 5 | 45 | |
| | 4 P | in | 9.65 | 13.39 | 2.64 | 0.59 | 11.81 | 2.36 | 1.26 | 0.20 | 1.77 | |
| | | mm | 245 | 340 | 67 | 15 | 300 | 60 | 32 | 5 | 45 | |
| 400 | 3 P | in | 8.27 | 13.39 | 2.64 | 0.59 | 11.81 | 2.60 | 1.26 | 0.20 | 1.77 | |
| | | mm | 210 | 340 | 67 | 15 | 300 | 66 | 32 | 5 | 45 | |
| | 4 P | in | 10.83 | 13.39 | 2.64 | 0.59 | 11.81 | 2.60 | 1.26 | 0.20 | 1.77 | |
| | | mm | 275 | 340 | 67 | 15 | 300 | 66 | 32 | 5 | 45 | |
| 160 / 200 | 3 P | SIRCO VM2 | in | 5.59 | 10.24 | 2.40 | 0.79 | 9.17 | 1.08 | 0.79 | 0.16 | 1.54 |
| | | | mm | 142 | 260 | 61 | 20 | 233 | 27.5 | 20 | 4 | 39 |
| | 4 P | | in | 5.59 | 10.24 | 2.40 | 0.79 | 9.17 | 1.08 | 0.79 | 0.16 | 1.54 |
| | | | mm | 142 | 260 | 61 | 20 | 233 | 27.5 | 20 | 4 | 39 |



repar_013_a_2_cat



Catalogue 2020